

A PARENT TUTORIAL »

UNDERSTANDING 2015 PSAT/NMSQT® RESULTS

A Case Study: Ima B. Student's PSAT/NMSQT® Score Report

Take a look at Ima B. Student's sample score report below and on the next page. Use the corresponding information to help you interpret your student's PSAT/NMSQT Score Report.

What Are Ima's Scores?

Ima's Evidence-Based Reading and Writing score is 380 and Math is 480. In Evidence-Based Reading and Writing, Ima's score is approaching the benchmark (explained on the report), but she is not quite on track for college readiness. In Math, however, Ima is exceeding the benchmark and is on track. Test scores, cross-test scores, and subscores can give Ima a better understanding of areas to work on.

What Are Her Score Percentiles?

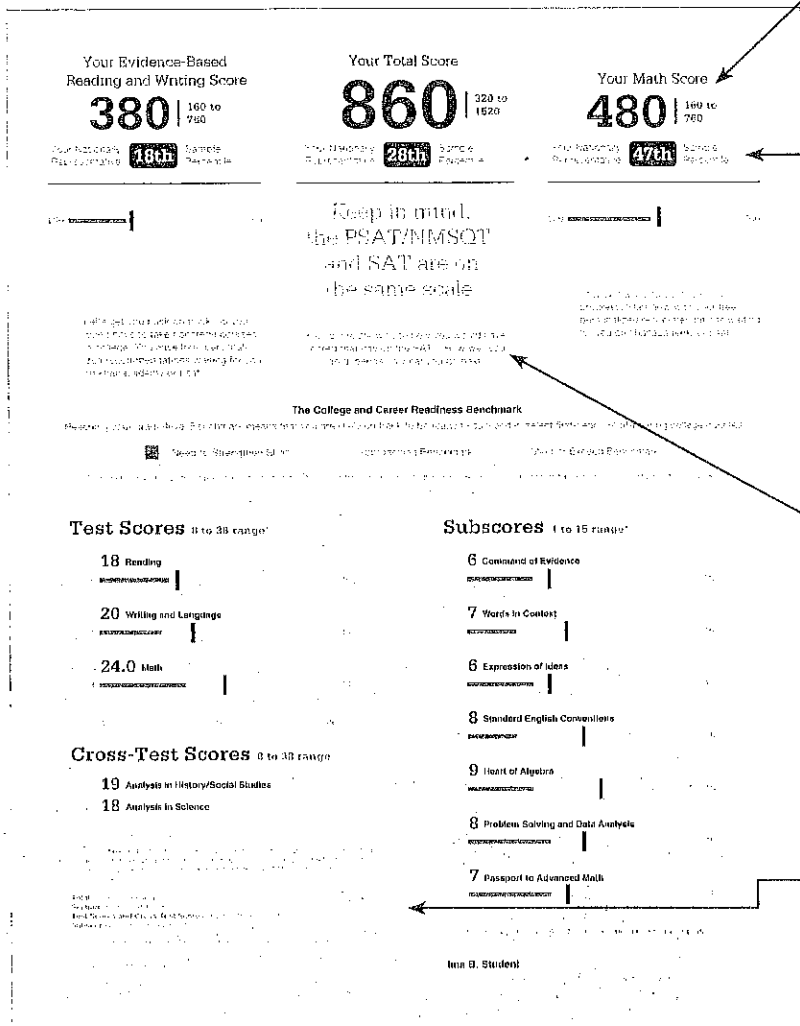
Since Ima is in the 10th grade, the percentiles compare her scores with those of all 10th-graders in the nation. Ima scored as well as or better in Evidence-Based Reading and Writing than 18 percent of a nationally representative group of sophomores. In Math, she scored as well as or better than 47 percent of a nationally representative group of sophomores. Additional percentiles are available in Ima's online score report.

How Will Ima Do on the SAT®?

The PSAT/NMSQT® and SAT are scored on a common scale; therefore if Ima had taken the SAT instead of the PSAT/NMSQT on the same test date, she would have received the same score. When Ima takes the SAT, she will likely have had additional learning from school and practice. Her PSAT/NMSQT results can help Ima focus her efforts in high school to be better prepared for the SAT.

What Are Her Score Ranges?

No test measures precisely what someone knows, and many factors can affect results. That is why test makers think of each score as a range that extends from a few points below to a few points above the score earned.



National Merit Scholarship Corporation

Michael Baker Corporation is the official provider of the National Merit Scholarship Program, an academic competition for recognition and college scholarship. To compete, students who qualify for recognition in the PSAT/NMSQT must score well on the PSAT/NMSQT. For more information, please visit www.nationalmerit.org.

If any of your responses to NMSQT's "Early Identification" questions (questions 1 and 2) are "No," you will not be eligible for the program. If you are eligible, you will receive a letter in the mail that will affect your ability to participate in the program.

National Merit Scholarship Corporation
Attn: Scholarship Administration
1500 Executive Drive, Suite 500
Cincinnati, OH 45221-0002

Students who have not been identified as eligible for the program should contact their school counselor for more information.

Your NMSC Selection Index

124*

NMSC uses a Selection Index based on PSAT/NMSQT scores to identify students who are eligible for the program. To determine your Selection Index, use the sum of your Reading, Writing and Language, and Math scores.

Eligibility Information

Only U.S. citizens and U.S. permanent residents are eligible for the program. Students who are not U.S. citizens or U.S. permanent residents are not eligible for the program. For more information, visit www.nationalmerit.org.

NOTE: *Student's score in high school and entering college is used to determine the PSAT/NMSQT score to that student's score of 124. The score is based on the PSAT/NMSQT score.

Entry Requirements

PSAT/NMSQT score of 124 or higher

U.S. citizen or U.S. permanent resident

Year to complete high school or 2nd year of college

18 years of age or older

U.S. Citizenship

U.S. permanent resident

Application for membership in the program

Application for admission to college

Application for admission to college

Your score indicates that you are already likely able to:

- Recognize and use the structure of a paragraph to support a claim or to present evidence in a persuasive text.
- Recognize and use the structure of a paragraph to support a claim or to present evidence in a persuasive text.
- Recognize and use the structure of a paragraph to support a claim or to present evidence in a persuasive text.
- Recognize and use the structure of a paragraph to support a claim or to present evidence in a persuasive text.

Your Scores: Next Steps

Reading Test

18

8 to 38

Improve your skills by focusing on your ability to:

- Recognize and use the structure of a paragraph to support a claim or to present evidence in a persuasive text.
- Recognize and use the structure of a paragraph to support a claim or to present evidence in a persuasive text.
- Recognize and use the structure of a paragraph to support a claim or to present evidence in a persuasive text.
- Recognize and use the structure of a paragraph to support a claim or to present evidence in a persuasive text.

Writing and Language Test

20

8 to 38

Improve your skills by focusing on your ability to:

- Recognize and use the structure of a paragraph to support a claim or to present evidence in a persuasive text.
- Recognize and use the structure of a paragraph to support a claim or to present evidence in a persuasive text.
- Recognize and use the structure of a paragraph to support a claim or to present evidence in a persuasive text.
- Recognize and use the structure of a paragraph to support a claim or to present evidence in a persuasive text.

Math Test

24.0

8 to 38

Improve your skills by focusing on your ability to:

- Recognize and use the structure of a paragraph to support a claim or to present evidence in a persuasive text.
- Recognize and use the structure of a paragraph to support a claim or to present evidence in a persuasive text.
- Recognize and use the structure of a paragraph to support a claim or to present evidence in a persuasive text.
- Recognize and use the structure of a paragraph to support a claim or to present evidence in a persuasive text.

Get more next steps online
studentscores.collegeboard.org

SAT Practice
Connect to FREE world-class SAT practice online on khanacademy.org/sat

AP® and course work
See which AP courses may be good matches for you

Register for the SAT
Select an SAT test date and register for it now

Will Ima Be Able to Enter the National Merit® Scholarship Program?

Ima has an NMSC Selection Index of 124, which is double the sum of her Reading (18), Writing and Language (20), and Math (24) Test scores. This index is used by National Merit Scholarship Corporation to designate students to be recognized in its National Merit Scholarship Program. Since an asterisk appears next to Ima's score, it means she does not meet entry requirements for the program. However, even if Ima met entry requirements, her score is not likely to take her further in the competition for awards. For entry requirements and information on how the competition works, see the *2015 Official Student Guide to the PSAT/NMSQT* or visit www.nationalmerit.org.

How Can Ima Improve Her Academic Skills?

Your Scores: Next Steps are based on her test scores, and what general skills similarly performing students understand. Ima can see which skills she performed well on and which she needs to improve. When she goes online and logs in to the full report online, she can see additional skills and improvement steps. Ima can also link her account to Khan Academy® for personalized practice recommendations.

Score Report

What Are the Next Steps for Ima?
Under *Get more next steps online*, Ima is directed to studentscores.collegeboard.org to learn how to prepare for the SAT and see her potential for challenging AP® course work.

When Should Ima Take the SAT?
As a sophomore, Ima should begin planning when she will take the SAT. Most students take the SAT for the first time in their junior year. By planning now, Ima can ensure she has adequate time to practice for the SAT. She can take advantage of practice resources by visiting studentscores.collegeboard.org.

How Can Ima Learn from Her Answers?
The score report is designed to be used with the student's PSAT/NMSQT test booklet. It lists all of Ima's answers and allows her to see the correct answer and difficulty level for each question. Ima can use her online score report to review the questions she answered incorrectly or omitted, and see detailed answer explanations explaining why her responses were correct or incorrect.

Your Question-Level Feedback

Writing and Language				Math Test - Calculator				Math Test - No Calculator			
Question #	Correct	Your Answer	Difficulty	Question #	Correct	Your Answer	Difficulty	Question #	Correct	Your Answer	Difficulty
1	A	A	Easy	1	A	A	Easy	1	A	A	Easy
2	B	A	Medium	2	B	A	Medium	2	B	A	Medium
3	A	A	Easy	3	A	A	Easy	3	A	A	Easy
4	C	B	Medium	4	C	B	Medium	4	C	B	Medium
5	D	A	Medium	5	D	A	Medium	5	D	A	Medium
6	B	A	Medium	6	B	A	Medium	6	B	A	Medium
7	C	A	Medium	7	C	A	Medium	7	C	A	Medium
8	C	A	Medium	8	C	A	Medium	8	C	A	Medium
9	D	A	Medium	9	D	A	Medium	9	D	A	Medium
10	B	A	Medium	10	B	A	Medium	10	B	A	Medium
11	A	A	Easy	11	A	A	Easy	11	A	A	Easy
12	A	A	Easy	12	A	A	Easy	12	A	A	Easy
13	D	A	Medium	13	D	A	Medium	13	D	A	Medium
14	O	A	Medium	14	O	A	Medium	14	O	A	Medium
15	A	A	Easy	15	A	A	Easy	15	A	A	Easy
16	C	A	Medium	16	C	A	Medium	16	C	A	Medium
17	A	A	Easy	17	A	A	Easy	17	A	A	Easy
18	C	A	Medium	18	C	A	Medium	18	C	A	Medium
19	D	A	Medium	19	D	A	Medium	19	D	A	Medium
20	B	A	Medium	20	B	A	Medium	20	B	A	Medium
21	A	A	Easy	21	A	A	Easy	21	A	A	Easy
22	B	A	Medium	22	B	A	Medium	22	B	A	Medium
23	A	A	Easy	23	A	A	Easy	23	A	A	Easy
24	A	A	Easy	24	A	A	Easy	24	A	A	Easy
25	C	A	Medium	25	C	A	Medium	25	C	A	Medium
26	D	A	Medium	26	D	A	Medium	26	D	A	Medium
27	O	A	Medium	27	O	A	Medium	27	O	A	Medium
28	A	A	Easy	28	A	A	Easy	28	A	A	Easy
29	B	A	Medium	29	B	A	Medium	29	B	A	Medium
30	A	A	Easy	30	A	A	Easy	30	A	A	Easy
31	D	A	Medium	31	D	A	Medium	31	D	A	Medium
32	A	A	Easy	32	A	A	Easy	32	A	A	Easy
33	D	A	Medium	33	D	A	Medium	33	D	A	Medium
34	O	A	Medium	34	O	A	Medium	34	O	A	Medium
35	D	A	Medium	35	D	A	Medium	35	D	A	Medium
36	A	A	Easy	36	A	A	Easy	36	A	A	Easy
37	B	A	Medium	37	B	A	Medium	37	B	A	Medium
38	A	A	Easy	38	A	A	Easy	38	A	A	Easy
39	O	A	Medium	39	O	A	Medium	39	O	A	Medium
40	B	A	Medium	40	B	A	Medium	40	B	A	Medium
41	D	A	Medium	41	D	A	Medium	41	D	A	Medium
42	C	A	Medium	42	C	A	Medium	42	C	A	Medium
43	A	A	Easy	43	A	A	Easy	43	A	A	Easy
44	A	A	Easy	44	A	A	Easy	44	A	A	Easy
45	D	A	Medium	45	D	A	Medium	45	D	A	Medium
46	C	A	Medium	46	C	A	Medium	46	C	A	Medium
47	O	A	Medium	47	O	A	Medium	47	O	A	Medium

The PSAT/NMSQT Sample Score Report

Hi, Ima B. Student

School Name: John F. Kennedy High School, School Code: 123456
2015, Grade 10
Student I.D. #24068907
Optional Code: #00
Access Code: A02670146P

CollegeBoard / NATIONAL MERIT
SCHOLARSHIP CORPORATION

PSAT/NMSQT[®]

Preliminary SAT/National Merit Scholarship Qualifying Test

Your Score Report

Get your full report online
studentscores.collegeboard.org

access code: **A02670146P**



SAT[®] Practice

Connect to FREE, world-class
SAT practice online on
khanacademy.org/sat



AP[®] and Course Work

See which AP courses may
be good matches for you



Register for the SAT

Select an SAT test date and
register for it now

BENCHMARKS AND RED/YELLOW/GREEN PERFORMANCE

What are the PSAT/NMSQT college and career readiness benchmarks?

The SAT Suite of Assessments offers grade-level benchmarks that can be used to gauge whether students are on track for becoming college ready each year from grades 8–12. College and career readiness benchmarks represent the section scores on each assessment that students should meet or exceed to be considered on track to be college ready. The PSAT/NMSQT provides separate benchmarks for sophomores and juniors.

The college and career readiness benchmarks are included in assessment reporting to help students understand their level of readiness for college and career training programs. The benchmarks help educators better understand how many and also which students are on track to have the skills necessary for college-entry, credit-bearing courses. Equipped with this information, educators can support students who need extra help while there is still time for improvement. Teachers can also accelerate the progress of students who meet or exceed the benchmarks.

Recommended Uses

College and career readiness benchmarks can help educators:

- » Identify students who are on track for success in college and career readiness.
- » Identify students who may need extra support while there is still time for improvement.
- » Find students who may be ready for more challenging course work.

College and career readiness benchmarks should not be used to assign academic tracks, to discourage students from pursuing college, or to keep students from participating in challenging courses.

Rather, the benchmarks are to be used to help all students better prepare for life after high school by taking courses that are aligned with their progress thus far and engaging in deep practice of the knowledge and skills that matter most for college.

How are the benchmarks calculated?

The college and career readiness benchmarks for the SAT predict a 75 percent likelihood of achieving at least a C in a set of first-year, credit-bearing college courses. The benchmarks are set at the section level, so there is a benchmark for Evidence-Based Reading and Writing and a benchmark for Math. The PSAT/NMSQT benchmarks are determined by observing how students grow from year to year and by adjusting the SAT benchmark using the average rate of progress.

PSAT/NMSQT COLLEGE AND CAREER READINESS BENCHMARKS		
	Evidence-Based Reading and Writing	Math
10th Grade PSAT/NMSQT	360	470
11th Grade PSAT/NMSQT	390	500