

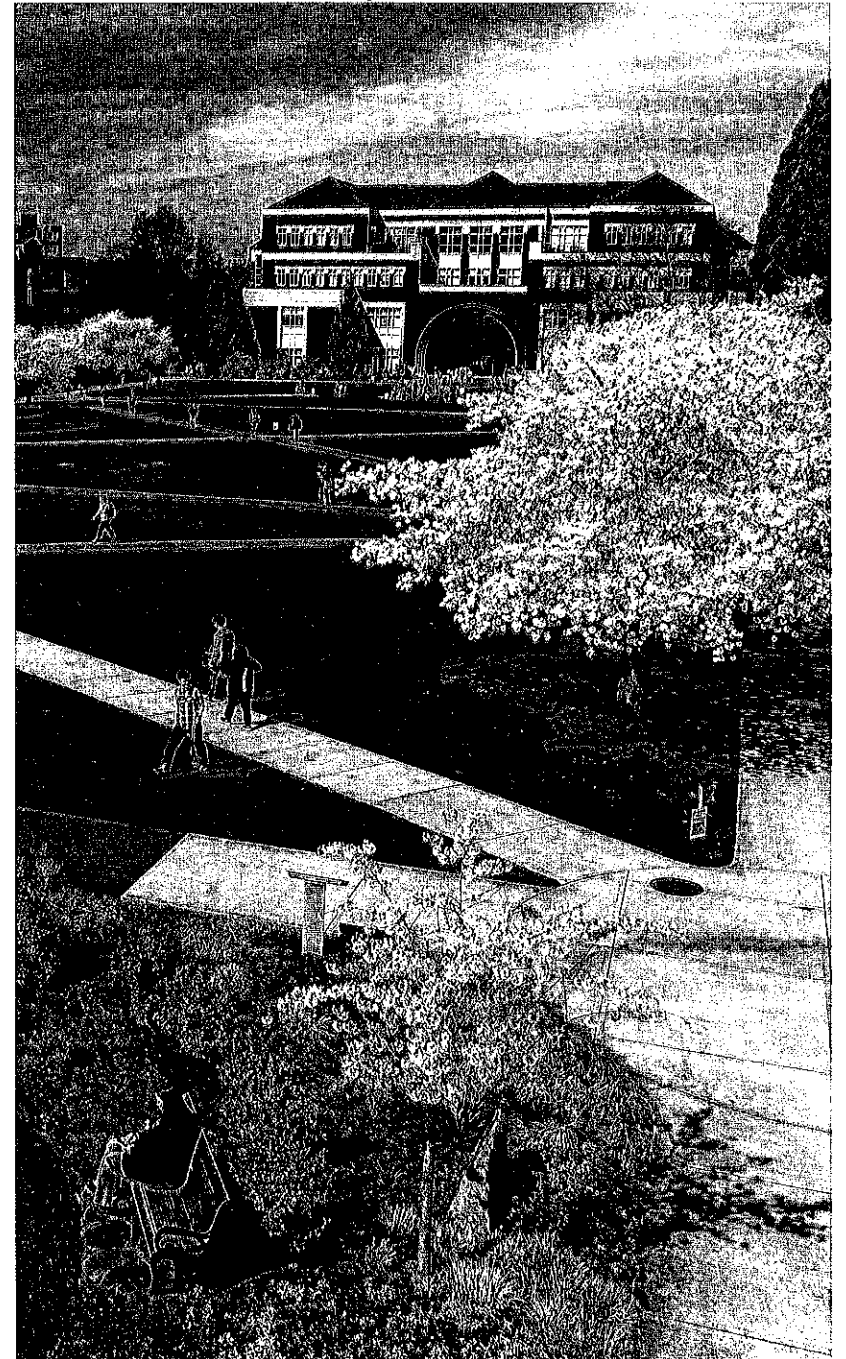
University of Portland  
Discover the Possibilities

UP



## Fulfill your potential.

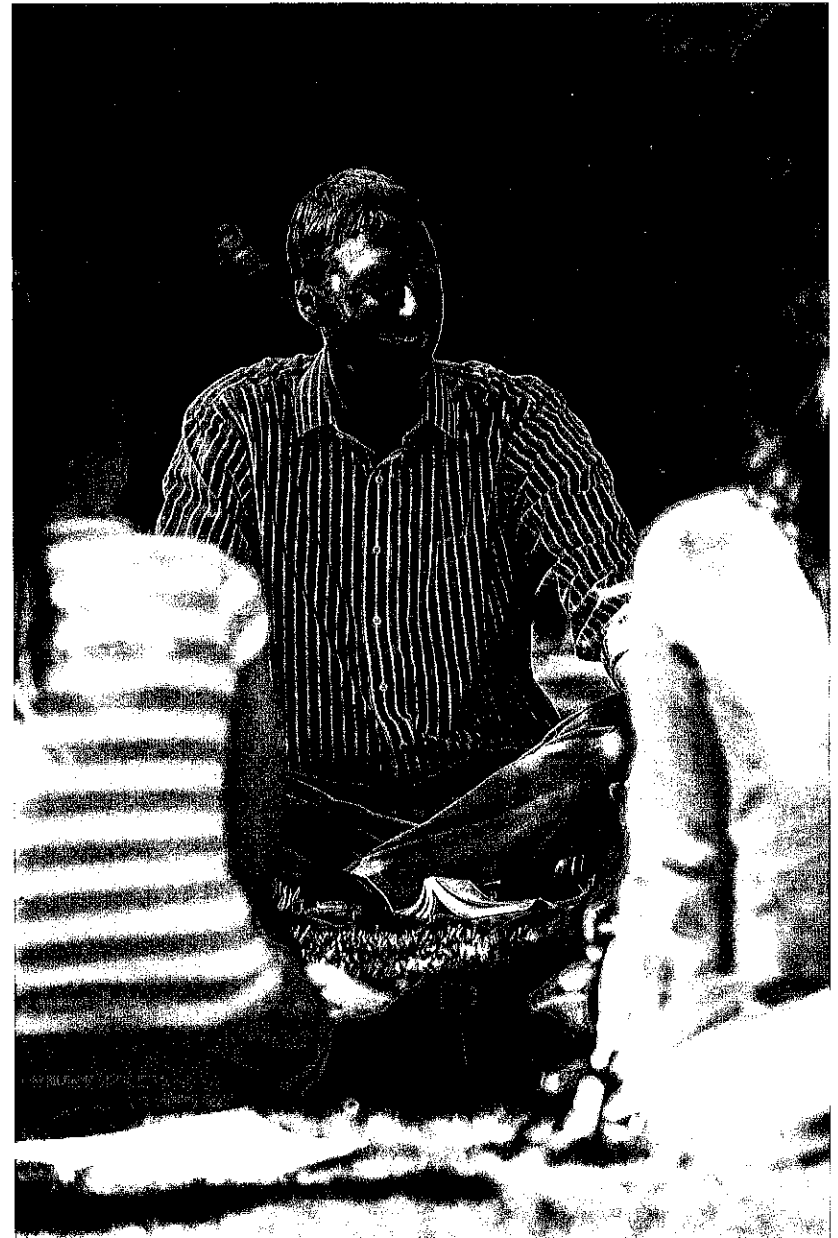
At Oregon's Catholic university, you will learn to think critically, communicate effectively, and respond ethically. Since 1901, OP has been guided by the Congregation of Holy Cross, a community of Roman Catholic priests and brothers who are dedicated to educating students in both mind and heart. This means, regardless of your major, you will take a foundation of core courses in the humanities, sciences, and social sciences, and you will have access to a wide range of academic options. You can select from over 40 majors, 32 minors, and 1,300 courses in our College of Arts and Sciences and Schools of Business, Education, Engineering, and Nursing. To enhance your experience, you can join one of more than 85 student-run clubs, the campus newspaper, radio, yearbook, or student government.



## Resources for success.

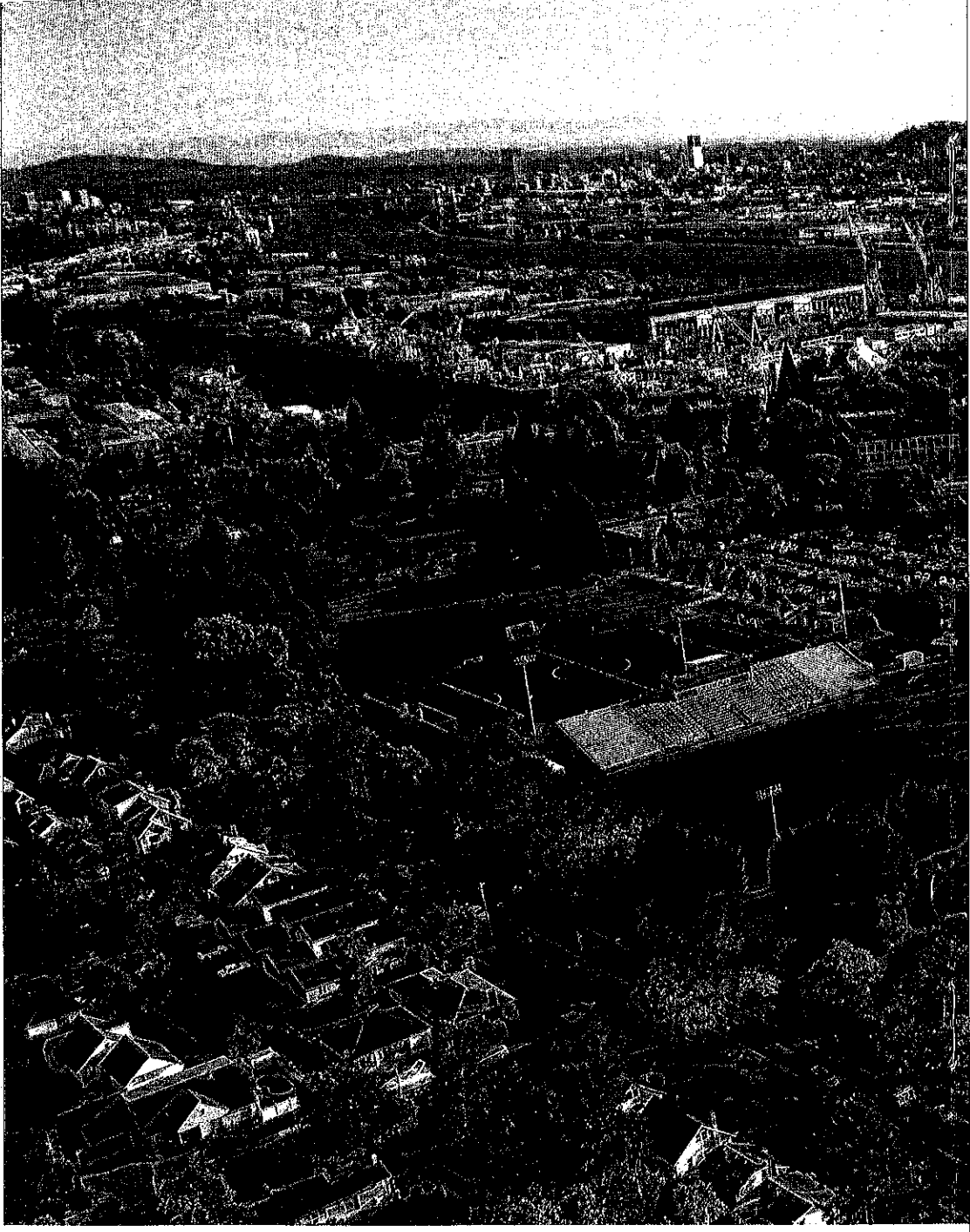
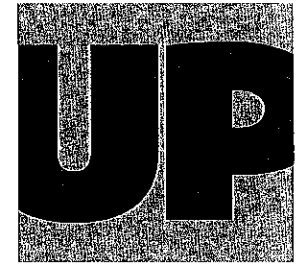
Our professors are committed to helping you succeed.

Because most classes have fewer than 30 students, professors know who you are and work with you to solve problems. The Shepard Academic Resource Center provides workshops and advice of all sorts, and the Career Center can work with you starting your freshman year to help you build your academic portfolio. Our Clark Library includes 19 group study rooms, as well as a digital lab and a computer learning lab, while the Franz Center for Leadership, Entrepreneurship and Innovation is a hub for new ideas and venture creation. Programs offered by Campus Ministry, the Moreau Center, and Studies Abroad expand your understanding of the greater world, and Army and Air Force ROTC and Honors programs hone your skills and talents.



For the sixth consecutive year, *Kiplinger's Personal Finance* listed University of Portland as its top Oregon school in the private universities category and also listed UP as **one of the top 100 private universities nationwide.**

**Invest in your future.**



**21**  
years

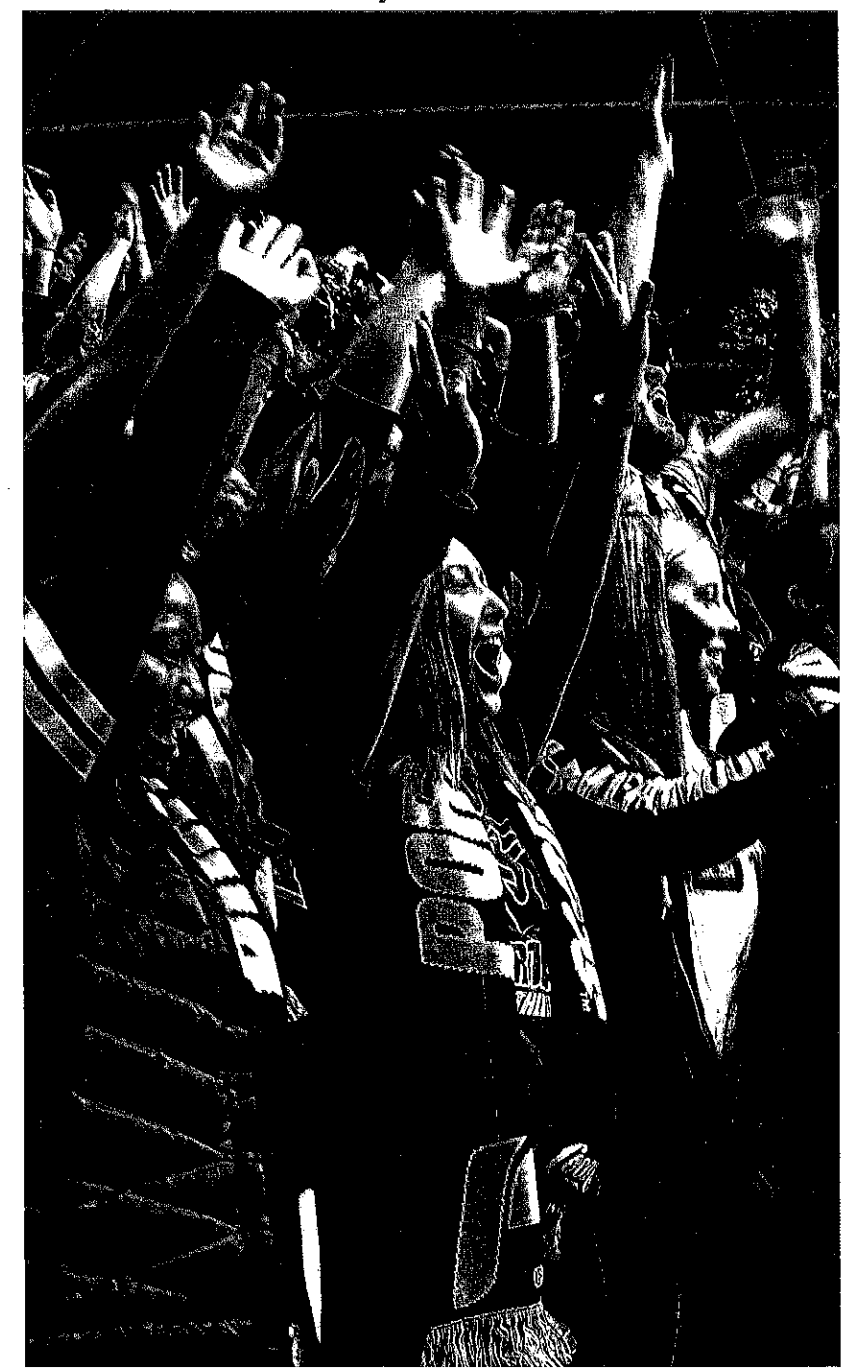
UP has consecutively ranked as a top 10 western regional university by *U.S. News & World Report*.

**#4**

**in the nation**

as one of the top producers of student Fulbright awards among master's level institutions in 2015-2016, according to a report by *The Chronicle of Higher Education*.

UP students annually spend over **165,000** hours in the local community completing volunteer and service-learning projects in schools, hospitals, food banks, homeless shelters, parks, and more.



## Active community.

Living in our Residence Halls is a vital part of the UP experience, and it puts you at the center of everything—in just minutes you can be in class, the library, computer labs, the dining hall, or our Beauchamp Recreation and Wellness Center, which opened last fall. But most importantly, you are part of a close-knit community of more than 2,000 students who live on campus. You can attend NCAA Division I athletic events, lectures, theater shows, spiritual retreats, movies, concerts, and more. Our Outdoor Pursuits program offers group activities such as ice climbing, camping, and hiking, and you can get involved with the larger community by joining intramural and club sports, volunteering, or taking part in international service-learning immersion programs.



The best way to find out if UP is right for you is to visit. Our Visitation Days offer academic information sessions, lunch, tours of campus and residence halls, and more. Go to [up.edu/visit](http://up.edu/visit) to see all of our visit options.

## Visit campus.

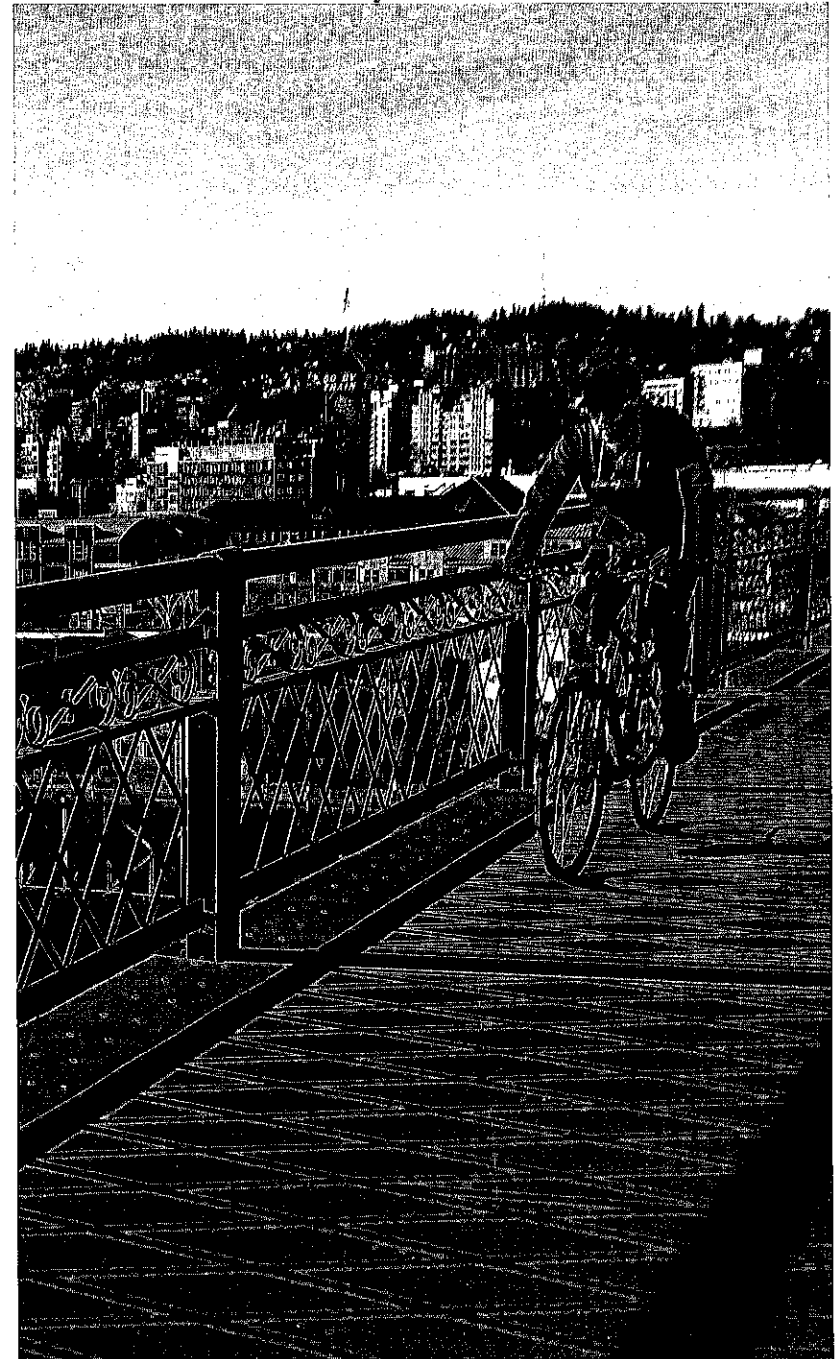


### 2016-2017 Visitation Days

Friday, October 14	Friday, March 31
Friday, November 11	Monday, April 3
Friday, February 17	Wednesday, April 12
Monday, February 20	Friday, April 21

## Living in Portland.

When you attend UP, you are not just at a great school but also part of a thriving city and remarkable state. You can catch the bus right outside campus or take one of UP's free shuttles to MAX Light Rail to get downtown, which is just minutes from campus. Portland is known for its great food, music and arts scene, friendly people, environmental sensibility, and access to the great outdoors. The city also offers a wealth of learning, internship, and employment experiences. To help you take advantage of these opportunities, UP's Career Center hosts four internship and career fairs each year. Just outside of Portland, you'll find a state that is legendary for its beauty and recreational activities. A short drive will get you to the Oregon Coast, Mt. Hood, or the Columbia River Gorge.



## FAST FACTS

**Founded** 1901.

**Mission** An Independent Catholic university guided by the Congregation of Holy Cross. Dedicated to the development of the whole person through teaching and learning, faith and formation, service and leadership.

**Campus Location** 150 acres. Adjacent to the Willamette River, minutes from downtown Portland.

**Student Body** 3,741 undergraduate and 509 graduate students from 47 states and 42 countries. 35% of undergraduates are minority students.

**2015 Freshman Class Profile** Average combined critical reading and math SAT score in 2015 was 1198 (equivalent to a redesigned SAT average of 1270) with the middle 50% from 1110-1280; average ACT scores for English and math were 26; and the average high school GPA was 3.65.

**Faculty** 360 professors. 14:1 student/faculty ratio.

**Athletics** Club, intramural, recreational, as well as 16 NCAA Division I sports (men's baseball, basketball, cross country, soccer, tennis, indoor and outdoor track and field; women's basketball, cross country, rowing, soccer, tennis, track and field, volleyball, and beach volleyball).

### **Beauchamp Recreation and Wellness Center**

This 73,657 square-foot facility has 3 indoor gyms, a climbing wall, indoor track, and exercise rooms.

**Campus Ministry** Retreats and activities for students of all faiths; daily Masses.

**Clark Library** Spaces for collaborative learning and quiet study, as well as a digital lab, 250,000 volumes onsite, and more than 1,500 periodical subscriptions.

**Moreau Center** Dozens of service and leadership opportunities locally, nationally, and internationally.

**Residence Life** Ten residence halls, which house more than 2,000 students.

**Student Activities** More than 85 student clubs and groups, as well as numerous concerts, films, and events.

**Studies Abroad** Programs of varying lengths in places such as Australia, Austria, China, England, France, Ireland, Italy, Japan, Latin America, and Spain.

**Admission Requirements** First-year students are admitted on the basis of merit (from academic records and scores on standardized tests), recommendation from a school counselor or teacher, and an essay. Admission decisions for international students are not made until the University has received all documents, including TOEFL or IELTS scores. I-20 forms are not issued until students are admitted to the University.

**Financial Aid** Average amount awarded to freshmen last year was more than \$23,300, excluding student loans. Over 97% of full-time undergraduates receive some type of aid.

**Tuition** For the 2016-2017 academic year, tuition is \$41,844; room and board (most popular package) is \$12,394.

*The University of Portland does not discriminate in its educational programs, admissions policies, scholarship and loan programs, athletic and other school-administered programs, or employment on the basis of race, color, national or ethnic origin, sex, disability, age, or sexual orientation. The University expressly reserves its rights and obligations to maintain its commitment to its Catholic identity and the doctrines of the Catholic Church.*

**Directions** Enter UP's main entrance from North Willamette Blvd. Follow the main drive to Waldschmidt Hall, and park in an Admissions Visitor spot along The Bluff. The Office of Admissions is on the 2nd floor.

University of Portland  
Office of Admissions  
5000 North Willamette Blvd.  
Portland, OR 97203  
503.943.7147  
888.627.5601

**General Email** [admissions@up.edu](mailto:admissions@up.edu)

**Schedule a Tour** [visit@up.edu](http://visit@up.edu)

**Learn More** [up.edu/admissions](http://up.edu/admissions)



[universityofportland](https://www.facebook.com/universityofportland)



[@uportland](https://www.instagram.com/uportland)



[@uportland](https://twitter.com/uportland)



[uportland](https://www.youtube.com/uportland)

## PROGRAMS OF STUDY 2016-2017

### College of Arts and Sciences

Biochemistry  
 Biology  
 Chemistry  
 Communication  
 Economics  
 English  
 Environmental Ethics & Policy  
 Environmental Science  
 French Studies  
 General Studies  
 German Studies  
 History  
 Mathematics  
 Music  
 Organizational Communication  
 Philosophy  
 Physics  
 Political Science  
 Psychology  
 Social Work  
 Sociology/Criminology Track  
 Spanish  
 Theater  
 Theology

### Pre-Professional Programs

Pre-Dentistry Study  
 Pre-Law Study  
 Pre-Medicine Study  
 Pre-Occupational Therapy Study  
 Pre-Optometry  
 Pre-Pharmacy Study  
 Pre-Physical Therapy Study  
 Pre-Veterinary Study

### Pamplin School of Business

Accounting  
 Economics  
 Finance  
 Marketing  
 Operations & Technology  
 Management

### School of Education

Elementary Education  
 Secondary Education

### Shiley School of Engineering

Civil Engineering  
 Computer Science  
 Electrical Engineering  
 Mechanical Engineering

### School of Nursing

Nursing

### Minors

Biology  
 Business Administration  
 Catholic Studies  
 Chemistry  
 Communication  
 Computer Science  
 Economics  
 Education  
 English  
 Entrepreneurship &  
 Innovation Management  
 Environmental Policy  
 Environmental Science  
 Fine Arts  
 French  
 Gender & Women's Studies  
 German  
 Global Business  
 Hellenic Studies  
 History  
 Mathematics  
 Music  
 Neuroscience  
 Philosophy  
 Physics  
 Political Science  
 Psychology  
 Social Justice  
 Sociology  
 Spanish  
 Sustainability  
 Theater  
 Theology