

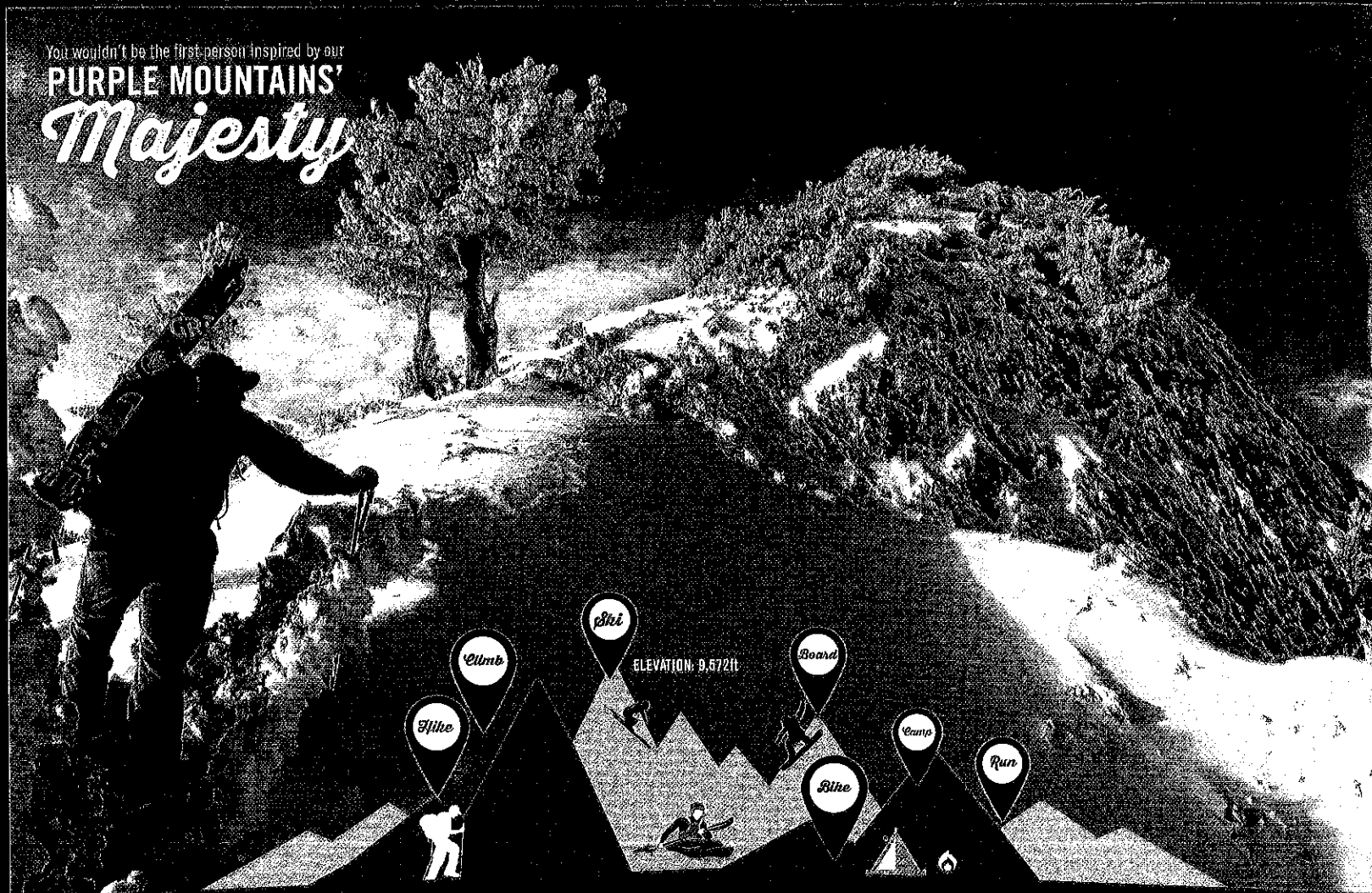


WEBER STATE UNIVERSITY

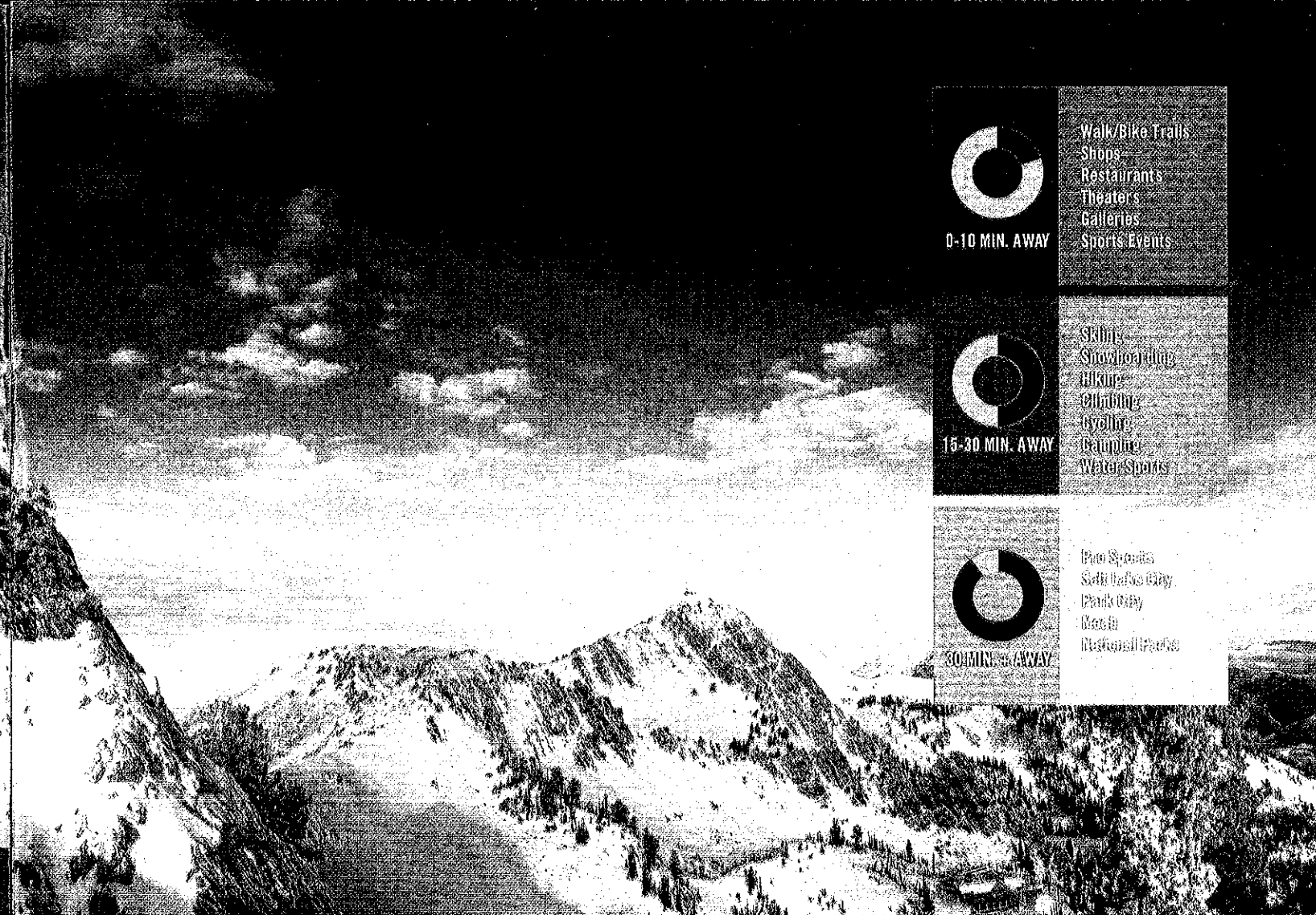
It begins
WILL
DREAM

2016-2017 HIGH SCHOOL GUIDE

You wouldn't be the first person inspired by our
PURPLE MOUNTAINS'
Majesty

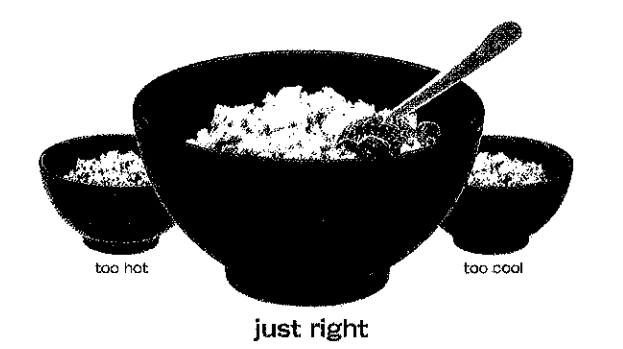
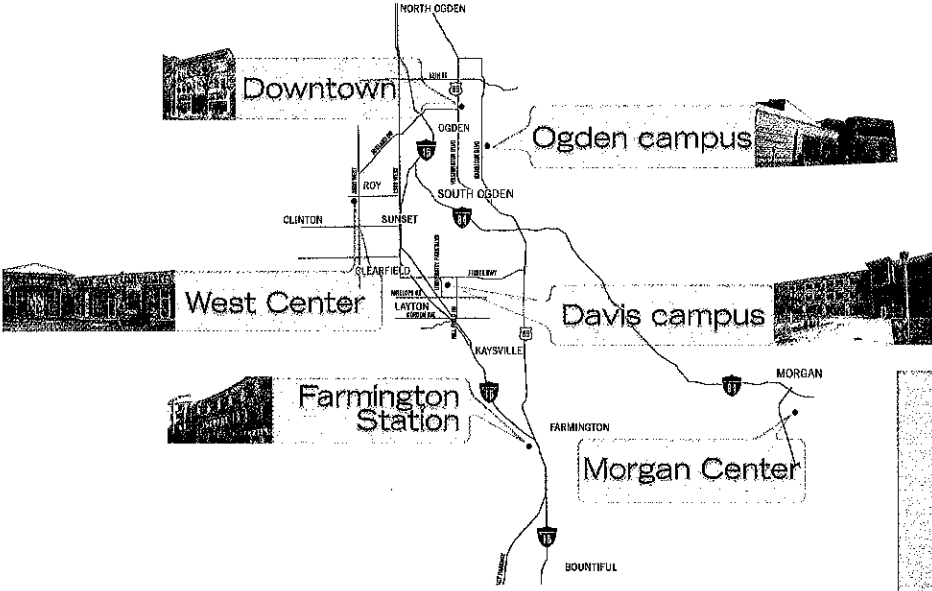


WEBER STATE SITS ON *500 acres* AT THE BASE OF THE *Wasatch Mountains*



- 0-10 MIN. AWAY**
 - Walk/Bike Trails
 - Shops
 - Restaurants
 - Theater's
 - Galleries
 - Sports Events
- 15-30 MIN. AWAY**
 - Skiing
 - Snowboarding
 - Hiking
 - Climbing
 - Cycling
 - Camping
 - Water Sports
- 30 MIN. AWAY**
 - Pro Sports
 - Salt Lake City
 - Park City
 - Moab
 - Regional Parks

Weber State University LOCATIONS




#justweber #greatgreatgreat #goldilockswouldapprove



WSU's Annual Security Report and Fire Safety Report provides info about reporting crime, crime statistics, crime prevention, alcohol and drug policies, fire statistics, etc., is available at weber.edu/police. You may request a paper copy by calling 801-626-7440.

For more info about reporting, safety, options, processes, and a list of on- and off- campus resources, go to weber.edu/safeatweber.



GET SOCIAL AT

WEBER STATE



COMPLETE PROGRAM LIST

College & Program Color Key

| | |
|---|---|
|  | Arts & Humanities weber.edu/cah • 801-626-6631 |
|  | Business & Economics weber.edu/goddard • 801-626-6534 |
|  | Education weber.edu/coe • 801-626-6309 |
|  | Engineering, Applied Science & Technology weber.edu/east • 801-626-7785 |
|  | Health Professions weber.edu/chp • 801-626-6136 |
|  | Science weber.edu/cos • 801-626-6302 |
|  | Social & Behavioral Sciences weber.edu/socialscience • 801-626-7809 |

| PROGRAM | AS/AAS | BS | BA | MINOR | MASTER |
|---|--------|-------------------------------|------------------------------------|-------|--------|
| Accounting | | x | | x | x |
| Aerospace Studies | | | | | |
| Anthropology | H/O | | | | |
| Apprenticeship | x | | | | |
| Archaeological Technician | | | | | |
| Archaeology/Anthropology | | | x | | |
| Art | | | x | x | |
| 2D Media | H/O | | Bachelor of Fine Arts (BFA) degree | | |
| 3D Media | H/O | | Bachelor of Fine Arts (BFA) degree | | |
| Visual Communication (Graphic Design) | H/O | | Bachelor of Fine Arts (BFA) degree | | |
| Art Education Composite * ** | | x | x | x | |
| Art History | | | | x | |
| Asian Studies (Foreign Language) | | | | x | |
| Asian Studies (Geography) | | | | | |
| Athletic Therapy | H/O | x | | | |
| Athletic Training | H/O | x | | | x |
| Automotive Service Technology | x | | | | |
| Automotive Technology | | x | | | |
| Bachelor of Integrated Studies (BIS) | | See program Web pages for BIS | | | |
| Biology Composite Teaching* ** | | x | | x | |
| Biotechnology (Industrial Microbiology) | | x | | | |
| Botany | H/O | x | | x | |
| Business Administration | | x | | x | x |
| Business Education Teaching | | | | x | |
| Business Education Composite Teaching | | x | | | |
| Business/Multimedia Technologies | x | x | | x | |
| Chemical Technician | x | | | | |
| Chemistry* ** | H/O | x | | x | |
| Child and Family Studies | H/O | BIS emphasis only | | | |
| Child Development | | | | x | |
| Communication* ** | | x | x | x | x |
| Civic Advocacy | | x | x | | |

| PROGRAM | AS/AAS | BS | BA | MINOR | MASTER |
|-------------------------------------|--------|---------------------------------------|----|-------|--------|
| Digital Media | | x | x | | |
| Interpersonal & Family | | x | x | | |
| Organizational | | x | x | | |
| Computer Science** | x | x | | x | |
| Construction Management Technology | x | x | | x | |
| Facilities Management | | x | | | |
| Game Development | | | | | |
| Game Development (ESL) | | | | | |
| Game Development | H/O | | | | |
| Dance** | H/O | | x | x | |
| Dance Education | | | x | x | x |
| Dental Hygiene | x | x | | | |
| Design Engineering Technology | x | x | | | |
| Early Childhood* | | x | x | | |
| Early Childhood Education | | | x | | |
| Earth Science Teaching* ** | H/O | x | | x | |
| Economics (Business) | H/O | | x | x | |
| Economics (General) | H/O | | | | |
| Electronics Engineering | | | x | | |
| Electronics Engineering Technology | H/O | x | x | | x |
| Elementary/Secondary Education* | H/O | x | | | x |
| Emergency Medical Technician (EMT) | | This is a certificate program | | | |
| English* ** | H/O | | x | x | x |
| Creative Writing | | | x | | |
| Professional & Technical Writing | | | x | x | |
| Entrepreneurship | | | | x | |
| English as a Second Language (ESL) | | | | | x |
| Environmental Geosciences (Applied) | H/O | x | | | |
| Environmental Studies (Geography) | | | | | |
| Environmental Sustainability | | This is a certificate program | | | |
| Ethnic Studies (Geography) | | BIS emphasis only | | | |
| European Studies | | | | x | |
| Exercise Science | | BIS emphasis only | | | |
| Family Studies | | x | | x | |
| Fashion Merchandising | | | | x | |
| Finance | | x | | | |
| Forensic Science | | x | | | |
| French* **/French Commercial | H/O | | x | x | |
| Game Development | | Certificate for computer science only | | | |
| General Studies (See also BIS) | | x | | | |
| General Technology | x | | | | |
| Geography | H/O | | | | |
| Geology | H/O | x | x | x | |
| Geospatial Analysis | | | | x | |
| German*/German Commercial | H/O | | x | x | |
| Gerontology | H/O | | | | |
| Health Administrative Services | | x | | x | x |
| Health Information Management | | x | | x | |

| PROGRAM | AS/AAS | BS | BA | MINOR | MASTER |
|--------------------------------------|-------------------------------|-----------------------------|----|-------|--------|
| Health Information Technology | x | | | | |
| Health Promotion** | | x | | x | |
| Long-Term Care Administration | | x | | x | |
| Health Promotion** (Education) | | x | | x | |
| Health Sciences | x | | | x | |
| Healthcare Coding and Classification | This is a certificate program | | | | |
| Heavy Duty Truck Technology | x | | | | |
| History | H/O | | | | |
| Human Performance Management | | x | | | |
| Human Resource Management | | x | | | |
| Information Systems & Technologies | H/O | x | x | | x |
| Interior Design (Technical Sales) | | | x | x | |
| Interior Design Technology | H/O | x | | | |
| International Business & Economics | This is a certificate program | | | | |
| International Relations | | | | x | |
| Japanese | | | | x | |
| Latin American Studies | | | | x | |
| Latin American Studies (Geography) | | x | | | |
| Legal Studies | | | | x | |
| Linguistics | | | | x | |
| Management | | x | | | |
| Manufacturing Engineering Technology | x | x | | | |
| Plastics and Composites | x | x | | | |
| Production Operations and Control | x | x | | | |
| Welding | x | x | | | |
| Marketing** | | x | | | |
| Mathematics* ** | H/O | x | x | x | |
| Mathematics (Applied) | | x | x | | |
| Mechanical Engineering Technology | x | x | | | |
| Medical Laboratory Sciences | H/O | x | x | | |
| Microbiology | H/O | x | | x | |
| Military Science | | | | | |
| Multimedia Journalism* | | x | x | | |
| Music | H/O | | x | x | |
| Music Education | H/O | Bachelor of Music Education | | | |
| Music Performance & Pedagogy | H/O | Bachelor of Music (BM) only | | | |
| Musical Theatre | H/O | | x | | |
| Network Management Technology | x | x | | | |
| Neuroscience | | | | | |
| Nursing | H/O | x | x | | x |
| Nutrition Education | | BIS emphasis | | | x |
| Paramedic Studies | x | | | | |
| Philosophy | H/O | | | x | |
| Photography | H/O | BFA degree only | | | x |
| Physical Education* ** | H/O | x | | x | |
| Physical Science Composite Teaching* | | x | | | |
| Physics* | H/O | x | | x | |

| PROGRAM | AS/AAS | BS | BA | MINOR | MASTER |
|-----------------------------------|--------|----|-------------------|-------|--------|
| Physics (Applied) | | x | | | |
| Public Health (Microbiology) | | | x | | |
| Public Health (History) | | | | | |
| Public Relations & Advertising | | | x | x | |
| Radiography | | x | | | |
| Radiologic Sciences | | | | | x |
| Diagnostic Medical Sonography | | | x | | |
| Nuclear Medicine | | | x | | |
| Radiation Therapy | | | x | | |
| Radiologic Sciences, Advanced | H/O | x | | x | |
| Cardiovascular Interventional | | | x | | |
| Magnetic Resonance Imaging | | | x | | |
| Women's Imaging | | | x | | |
| Radiologist Assistant | | | x | | |
| Recreation | | | | x | |
| Respiratory Therapy | | x | x | | |
| Social Science Composite Teaching | | | | | |
| Social Work | H/O | | | | |
| Sociology | H/O | x | | x | |
| Spanish* **/Spanish Commercial | H/O | | x | x | |
| Special Education* | | | x | | |
| Sport Coaching | | | BIS | | x |
| Sports Medicine | | | BIS emphasis only | | |
| Supply Chain Management | | | x | | |
| Taxation | | | | | x |
| Theatre Arts* ** | H/O | | x | x | |
| Web 2.0 User Experience | | | | | |
| Women's Studies | | | | | |
| Zoology | H/O | x | | x | |

PRE-PROFESSIONAL PROGRAMS

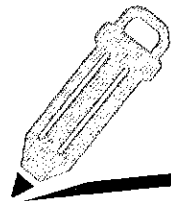
| | |
|------------------|---------------------------|
| Pre-Agriculture | Pre-Optometry |
| Pre-Chiropractic | Pre-Pharmacy |
| Pre-Dentistry | Pre-Physical Therapy |
| Pre-Forestry | Pre-Physician's Assistant |
| Pre-Horticulture | Pre-Podiatry |
| Pre-Medicine | Pre-Veterinary Medicine |

You must declare a major for pre-professional programs. Contact the college advisor for information.

H/O Honors Option * Available in a teaching major ** Available in a teaching minor

AS: Associate of Science • AAS: Associate of Applied Science • BS: Bachelor of Science • BA: Bachelor of Art • BFA: Bachelor of Fine Art • BIS: Bachelor of Integrated Studies

Apply to WSU



WSU is open enrollment, and there isn't an application deadline. High school students may apply beginning Sept. 1 of their senior year. If you have completed any WSU Concurrent Enrollment classes during high school, you do not need to reapply for admission.

1. FILL OUT THE *application online*

getintoweber.com

2. SUBMIT *required documents*

A. Official high school transcript sent directly from the high school, or GED documentation. If students have completed 30 or more college credits, they do not need to submit a high school transcript.

B. ACT/SAT scores. (These tests are not required for admission, but the scores will help determine scholarship eligibility, and math and English placement.)

C. Official transcripts from all colleges or universities where the student has completed work (including Concurrent Enrollment). The transcripts must be sent directly from the colleges to the WSU Admissions Office.

3. PAY THE \$30 *application fee*

Concurrent Enrollment

STUDENTS: *Get the Edge*

If you have 12 or more WSU Concurrent Enrollment credits with a 3.0 GPA by the time you graduate high school, you may be eligible for the EDGE Scholarship.

Go to weber.edu/concurrentenrollmentedge for more info.

SENIORS: *Status Switch*

Weber State University has now made it easier for you to make the transition from a high school concurrent student to a fully admitted WSU student. You don't need to reapply for admission, simply follow these easy steps:



1. Log into your eWeber student portal at weber.edu.
2. Click on the Admissions tab, or search for "Status Switch." You will see a light-switch icon. Click on the icon.
3. Complete the questions, and you're done!

GREAT VALUE GUARANTEE

\$5,524

approximate in-state tuition and fees

Compare & Save!

Potential additional costs per year (fall & spring semesters):
Books: \$800 Room & Board: \$5,790-9,696

Apply for scholarships



Weber is one of the most affordable universities in the U.S., and financial aid can help make the cost even lower.

1. BE ADMITTED to *WSU*

Complete "Apply to WSU" steps

2. FILL OUT THE *application online*

A. Log into the eWeber portal and select the "Financial Aid" tab.

B. Click on the "Finaid and Scholarship Application" app and complete the scholarship application before the **January 9, 2017, priority deadline.**

2016-17 *Quick Guide*

All the information you need to help you connect with Weber State University!

CONTACT US

ADMISSIONS
801-626-6050
admissions@weber.edu
getintoweber.com

FINANCIAL AID & SCHOLARSHIPS
801-626-7569
finaid@weber.edu
scholarship@weber.edu
weber.edu/scholarships

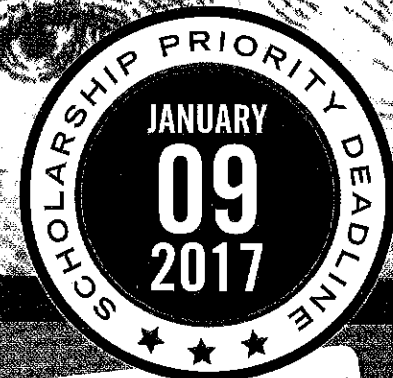
HELPFUL LINKS

New student orientation weber.edu/orientation
Placement tests weber.edu/accuplacer
Advising weber.edu/advisors
Undocumented students weber.edu/undocumented

WSU SCHOLARSHIPS for New Freshmen (Resident)

weber.edu/scholarships

weber.edu/financialaid



Academic Scholarships

Academic scholarships are based on your index score (ACT/SAT + GPA).

Presidential-Aletheia Scholarship

- Four-year full tuition and general fees scholarship
- Requires a minimum 128 index score
- Must maintain 3.75 WSU GPA and be full time (15-18 credits)
- For complete details, visit weber.edu/aletheia

High Honors/Honors/Achievement Scholarships

- High honors: 120-127 index; \$2,800 per year.
- Honors: 115-119 index; \$1,800 per year.
- Achievement: 105-114 index; \$900 per year.

Activity Scholarships

Awarded to students who participate in campus activities, including: NCAA athletics, bowling, cheerleading, cycling, honors, debate, rodeo, hockey, student newspaper, science programs, skiing, visual arts and more! For more information on these scholarships, go to weber.edu/scholarships.

Performing Arts Scholarships

Performing arts scholarships are awarded by audition in the following areas: vocal, band, orchestra, dance, theatre, musical theatre and more! Call 801-626-6437 before **January 9, 2017**, for audition dates and requirements.

Leadership Scholarships

Ambassador Scholarship: To apply to be a WSU Ambassador, visit weber.edu/ambassadors or call 801-626-6050 for more information.

Emerging Leaders Scholarship: To apply, visit weber.edu/emergingleaders or call Department of Student Involvement at 801-626-6349.

FYE Peer Mentoring: To apply, visit weber.edu/fyementors or call the Student Success Center at 801-626-6752.

Student Alumni: To apply, visit alumni.weber.edu/saa or call the Lindquist Alumni Center at 801-626-7535.

Student Government: To apply, visit weber.edu/studentinvolvement or call Department of Student Involvement at 801-626-6349 for more information.

Women's Center Scholarships: To apply visit, weber.edu/womenscenter/scholarships.html

Departmental Scholarships

Awarded through the academic college of your departmental major. Priority is given to continuing students with 60+ hours. Requirements vary per scholarship. For more information about donor-sponsored departmental scholarships, contact your department chair's office or apply through the eWeber portal.

*Scholarships listed on this document are applicable for first-time undergraduate degree-seeking students only.

Scholarship Index

| TEST SCORE | SAT (CR + M) | ACT | GPA | | | | | | | | | | | | | | | | | | | | |
|------------|--------------|-----|-----|-----|-----|-----|-----|-----|-----|-----|-----|-----|-----|-----|-----|-----|-----|-----|-----|-----|-----|-----|-----|
| | | | 4.0 | 3.9 | 3.8 | 3.7 | 3.6 | 3.5 | 3.4 | 3.3 | 3.2 | 3.1 | 3.0 | 2.9 | 2.8 | 2.7 | 2.6 | 2.5 | 2.4 | 2.3 | 2.2 | 2.1 | 2.0 |
| 1800 | 36 | 36 | 120 | 140 | 139 | 137 | 136 | 135 | 134 | 133 | 132 | 131 | 130 | 129 | 128 | 127 | 126 | 125 | 124 | 123 | 122 | 121 | 120 |
| 1550 | 36 | 36 | 119 | 138 | 137 | 135 | 134 | 133 | 132 | 131 | 130 | 129 | 128 | 127 | 126 | 125 | 124 | 123 | 122 | 121 | 120 | 119 | 118 |
| 1520 | 34 | 34 | 118 | 137 | 136 | 134 | 133 | 132 | 131 | 130 | 129 | 128 | 127 | 126 | 125 | 124 | 123 | 122 | 121 | 120 | 119 | 118 | 117 |
| 1470 | 33 | 33 | 117 | 136 | 135 | 133 | 132 | 131 | 130 | 129 | 128 | 127 | 126 | 125 | 124 | 123 | 122 | 121 | 120 | 119 | 118 | 117 | 116 |
| 1420 | 32 | 32 | 116 | 135 | 134 | 132 | 131 | 130 | 129 | 128 | 127 | 126 | 125 | 124 | 123 | 122 | 121 | 120 | 119 | 118 | 117 | 116 | 115 |
| 1380 | 31 | 31 | 115 | 134 | 133 | 131 | 130 | 129 | 128 | 127 | 126 | 125 | 124 | 123 | 122 | 121 | 120 | 119 | 118 | 117 | 116 | 115 | 114 |
| 1340 | 30 | 30 | 114 | 133 | 132 | 130 | 129 | 128 | 127 | 126 | 125 | 124 | 123 | 122 | 121 | 120 | 119 | 118 | 117 | 116 | 115 | 114 | 113 |
| 1300 | 29 | 29 | 113 | 132 | 131 | 129 | 128 | 127 | 126 | 125 | 124 | 123 | 122 | 121 | 120 | 119 | 118 | 117 | 116 | 115 | 114 | 113 | 112 |
| 1260 | 28 | 28 | 112 | 131 | 130 | 128 | 127 | 126 | 125 | 124 | 123 | 122 | 121 | 120 | 119 | 118 | 117 | 116 | 115 | 114 | 113 | 112 | 111 |
| 1220 | 27 | 27 | 111 | 130 | 129 | 127 | 126 | 125 | 124 | 123 | 122 | 121 | 120 | 119 | 118 | 117 | 116 | 115 | 114 | 113 | 112 | 111 | 110 |
| 1180 | 26 | 26 | 110 | 129 | 128 | 126 | 125 | 124 | 123 | 122 | 121 | 120 | 119 | 118 | 117 | 116 | 115 | 114 | 113 | 112 | 111 | 110 | 109 |
| 1140 | 25 | 25 | 109 | 128 | 127 | 125 | 124 | 123 | 122 | 121 | 120 | 119 | 118 | 117 | 116 | 115 | 114 | 113 | 112 | 111 | 110 | 109 | 108 |
| 1110 | 24 | 24 | 108 | 127 | 126 | 124 | 123 | 122 | 121 | 120 | 119 | 118 | 117 | 116 | 115 | 114 | 113 | 112 | 111 | 110 | 109 | 108 | 107 |
| 1070 | 23 | 23 | 107 | 126 | 125 | 123 | 122 | 121 | 120 | 119 | 118 | 117 | 116 | 115 | 114 | 113 | 112 | 111 | 110 | 109 | 108 | 107 | 106 |
| 1030 | 22 | 22 | 106 | 125 | 124 | 122 | 121 | 120 | 119 | 118 | 117 | 116 | 115 | 114 | 113 | 112 | 111 | 110 | 109 | 108 | 107 | 106 | 105 |
| 990 | 21 | 21 | 105 | 124 | 123 | 121 | 120 | 119 | 118 | 117 | 116 | 115 | 114 | 113 | 112 | 111 | 110 | 109 | 108 | 107 | 106 | 105 | 104 |
| 950 | 20 | 20 | 104 | 123 | 122 | 120 | 119 | 118 | 117 | 116 | 115 | 114 | 113 | 112 | 111 | 110 | 109 | 108 | 107 | 106 | 105 | 104 | 103 |
| 910 | 19 | 19 | 103 | 122 | 121 | 119 | 118 | 117 | 116 | 115 | 114 | 113 | 112 | 111 | 110 | 109 | 108 | 107 | 106 | 105 | 104 | 103 | 102 |
| 870 | 18 | 18 | 102 | 121 | 120 | 118 | 117 | 116 | 115 | 114 | 113 | 112 | 111 | 110 | 109 | 108 | 107 | 106 | 105 | 104 | 103 | 102 | 101 |
| 830 | 17 | 17 | 101 | 120 | 119 | 117 | 116 | 115 | 114 | 113 | 112 | 111 | 110 | 109 | 108 | 107 | 106 | 105 | 104 | 103 | 102 | 101 | 100 |
| 790 | 16 | 16 | 100 | 119 | 118 | 116 | 115 | 114 | 113 | 112 | 111 | 110 | 109 | 108 | 107 | 106 | 105 | 104 | 103 | 102 | 101 | 100 | 99 |
| 740 | 15 | 15 | 99 | 118 | 117 | 115 | 114 | 113 | 112 | 111 | 110 | 109 | 108 | 107 | 106 | 105 | 104 | 103 | 102 | 101 | 100 | 99 | 98 |
| 690 | 14 | 14 | 98 | 117 | 116 | 114 | 113 | 112 | 111 | 110 | 109 | 108 | 107 | 106 | 105 | 104 | 103 | 102 | 101 | 100 | 99 | 98 | 97 |

In 2016-17, WSU provided more than

\$92 Million

SCHOLARSHIPS & FINANCIAL AID

13,900 STUDENTS

Are you planning to defer enrollment to WSU for military or religious service?

Apply for scholarships now, and we'll hold them for later. Find out what you need to do before and after you return.

weber.edu/returntoweber



SAVE THE DATE *Wildcat Welcome!*

Wednesday, March 1, 2017

Wildcat Welcome is a fun way to learn about Weber State -- everything from majors to campus life -- and qualified students can receive and accept their academic scholarship.

'Come claim your scholarship offer, play games, explore majors & win prizes while you plan your future at WSU!*

* Academic scholarship offers for eligible students will be available at Wildcat Welcome.

weber.edu/wildcatwelcome

Inclusivity & Diversity

Pivotal to Weber State University's mission is the need to *embrace and value* the diversity of its members.

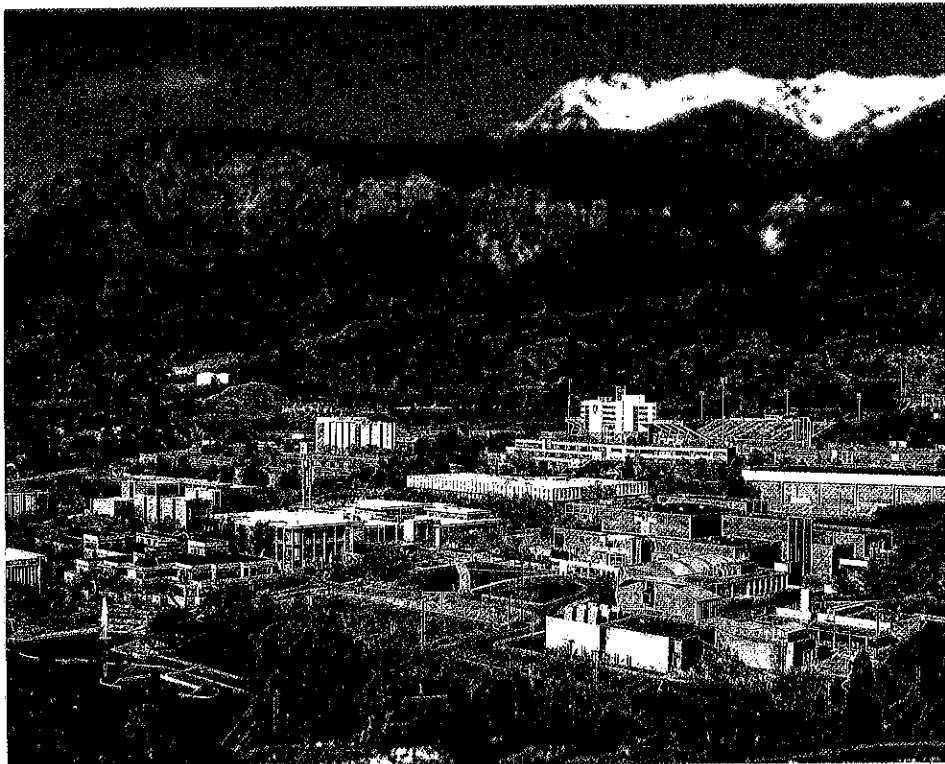
Acknowledging the uniqueness of each individual, we seek to cultivate an environment that encourages *freedom of expression.*

Because the university is a community where inquiry is nurtured and theories are tested, **EVERY INDIVIDUAL HAS the right to feel safe** to express ideas that differ from those held by other members of the community.

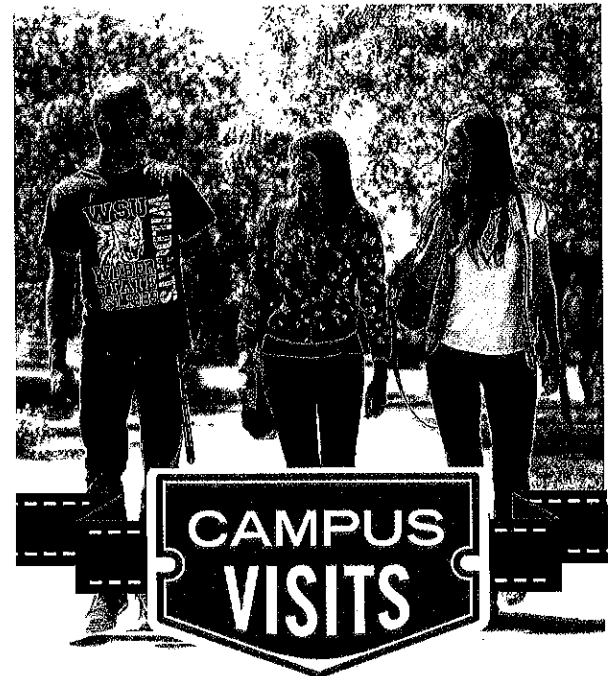
However, all persons who aspire to be part of our campus community **must accept** the responsibility to demonstrate civility and respect *for the dignity of others.*

Recognizing that the proper balance between freedom of expression *and respect for others* is not always apparent or easy to achieve, **WE MUST CONTINUALLY CHALLENGE** ourselves and each other in an atmosphere of mutual concern, **good will and respect.**

Therefore, expressions or actions that disparage an individual's or group's *ethnicity, gender, religion, sexual orientation, marital status, age or disability* are contrary to the mission of **WEBER STATE UNIVERSITY.**



Get Social at Weber State



Tours available Monday - Friday
getintoweber.com • 801-626-6050

WSU does not discriminate on the basis of race, color, national origin, pregnancy, genetics, age (over 40), disability, religion, sex, sexual orientation, gender identity/expression, veteran, active military status and other classifications protected by law in its programs and activities. Information is available from, and discrimination and harassment complaints may be filed with, the Executive Director of AA/EO, AA-EO@weber.edu, MA 101, or 801-626-6239.